

## 1. Overview:

Thank you for purchasing the 'Evolution' multi-Clip which is the latest solution for repairing unlock for almost all Motorola™ GSM/Dualband/Triband phones.

The multi-clip is a tri-core hardware (that means that it could operate independently on DSC/Patriot/Accer buses).



Fig. 1

## 2. How to repair (unlock);

- |   |
|---|
| A. <a href="#">Phones which uses DSC bus (phones which connects to RoEmmi, EmmiBox, MotoFix, MotoKey, Pemaster, etc) which are version before xx13xx or which are xx13xx.</a>   |
| B. <a href="#">Phones which uses DSC bus (phones which connects to RoEmmi, EmmiBox, MotoFix, MotoKey, Pemaster, etc) but which are not previous xx13xx or xx13xx (version). Those phones are known as xx14xx versions. To learn how to decide if your phone is xx14xx read <a href="#">How To find if your phone is xx14xx version.</a></a> |
| C. <a href="#">Phones which connect to Patriot connector.</a>   |

D. [Accer T19x phones.](#)

**Warning!!! Changing IMEI could be illegal in your country/area. Check local law before using it. Changing IMEI should only be considered for repairing your IMEI after phone IMEI was accidentally erased. Nobody else than you could be legally prosecuted if you use this feature!!!**

A. **Phones which uses DSC bus (phones which connects to RoEmmi, EmmiBox, MotoFix, MotoKey, etc) which are version before xx13xx or which are xx13xx.**

To unlock:

- Power up the box
- Insert a SIM card in the phone
- Connect phone cable to phone
- Switch box to xx13
- Power on phone and wait until xx13/xx14 led is stable
- When phone asks for special code insert 00000000# and wait 1 sec after it says 'Completed' or till it reach network
- If necessary repeat previous steps.

To remove 'Tamper Alert':

- Power up the box
- Connect phone cable to phone
- Switch box to xx13
- Keep 'Action Button' pressed
- Power on phone and wait until xx13/xx14 led is lights and phone powers off
- If necessary repeat previous steps.

**B. Phones which uses DSC bus (phones which connects to RoEmmi, EmmiBox, MotoFix, MotoKey, etc) but which are not previous xx13xx or xx13xx (version). Those phones are known as xx14xx versions.**

The latest Mot™ phones which connects to DSC bus cannot be unlocked directly using MotoFix, MotoKey, Pemaster, etc (enter tamper). You can find if your phone is in this category by using procedure described in [How To find if your phone is xx14xx version](#). If you find your phone in this category you should do the following steps:

- Power up box
- Switch box to xx14
- Connect phone to box by cable with no SIM card inside
- Power up phone.
- **If xx13/xx14 led start lighting on and off with a frequency of one per second or close to this you should let the phone connected till the led becomes stable (on or off). This step could take a lot of time (generally 10-20 minutes) – it depends of phone version. In this step, the box 'learns' the phone version. When it is finished the new phone version is recorded inside the box and you could check this by powering off and on the phone again. The xx13/xx14 led should light stable this time. The box will recognize now any phone that has the learned version and solve it by direct unlocking or logs. If this step fails you should repeat it again**
- If xx13/xx14 led lights three times try to power off and on the phone again.
- If xx13/xx14 led lights on and is stable that means that you could unlock it.

Unlock procedure for xx14xx (only if the xx13/xx14 led lights on stays on when you connect the phone to box).

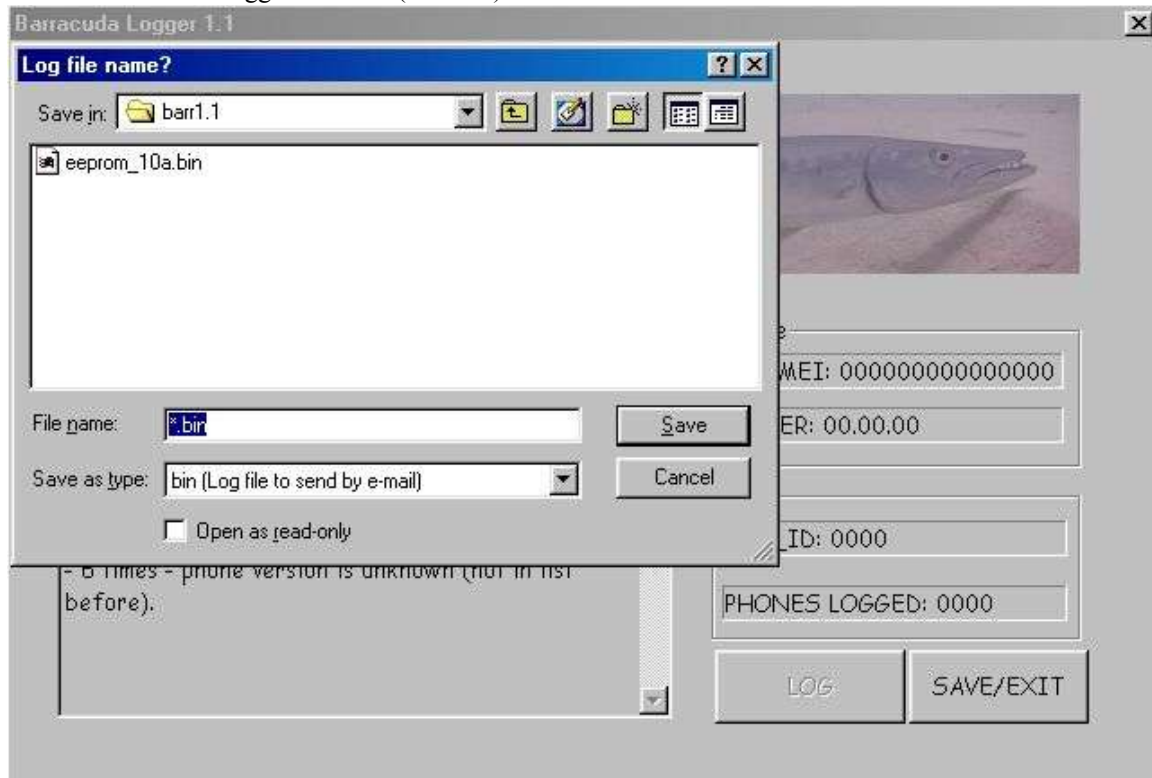
- Press the 'Action Button' and wait till xx13/xx14 led lights once.
- Power off phone and check if it is unlocked. If the phone is not unlocked try to repeat the step before once or twice
- If phone is still locked; check first with a SIM card if phone is not in 'Tamper Alert' state or if phone asks to wait before entering code ('Please Wait to Enter Special Code'). If phone is in Tamper state or asks to wait connect phone to box switched to xx14 with SIM card inside, power on phone, wait till phone says on display 'Enter Now Special Code' and press 'Action Button'. Phone should be unlocked. If all this fails take a log using barr logger software and PC cable and send it to reseller. You should receive the phone code which you can enter manually on phone with SIM card inside when the phone accepts to enter the code.

Note: after pressing 'Action Button' in xx14 mode the box will also clean lock code, lifetimer and security code.

Note: If you have the IMEI Change switch in position 1 at unlock the box will change the phone IMEI. The box will not change the IMEI for phones which cannot be direct unlocked (ex. Versions F0\_14\_07, or F0\_14\_08 AKA v50 Secure phones).

To make a log on PC (to get phone unlock code from reseller).

- Power up the box
- Connect box to PC by attached PC cable
- Start on PC the logger software (barr.exe)



- Select a file name for log files (e.g. today\_10\_12\_2002\_01\_logs.bin – do not overwrite old logs file if you did not saved them.)
- On PC desktop application is waiting to receive data from box (LOG button is unavailable)
- Connect phone to box. Power on phone (blue led should turn on and stay lighting)
- In few seconds blue led will turn off and on once
- On PC barr logger will receive data from box (phone IMEI, version, etc.) and LOG button will became available. Press LOG button to log the phone
- Repeat previous steps (connect new phone to box and log them) as many time as necessary.

- Exit barr logger by pressing SAVE/EXIT and send the bin file to reseller. You will receive a text file containing unlock code for every IMEI you logged.

### **C. Phones which connect to Patriot connector.**

To unlock:

- Power up the box
- Put IMEI Change switch in position 0
- Connect phone cable to phone and box
- Power up phone
- Press 'Action Button'
- Wait 10 secs.
- If P2K led lights three times check connector and repeat previous steps
- If P2K led lights once should be ok (check if phone is unlocked).

To change IMEI you should do the unlock steps and the only difference is that you should put 'IMEI Change' switch to position 1.

### **D. Accer T19x phones.**

- Power up the box
- Connect cable to phone and box (warning t19x cable is connects to phone trough headset connector)
- Power up phone and after the accer leds changes their luminosity for few seconds phone should power on and should be unlocked.

### **How To find if your phone is xx14xx version:**

- Power up the box
- Connect phone cable to phone
- Switch box to xx13
- Power on phone and wait until xx13/xx14 led is stable
- Type \*#06# on phone and check if IMEI is 0000000000000000
- If yes phone is xx13xx or pre xx13xx
- If not phone is xx14xx
- If IMEI looks funny you should repeat the previous steps.



.....And this is only the beginning of the NEXT generation multiclips .....keep in touch !!

