

## Panasonic Remote Unlock Server Manual:

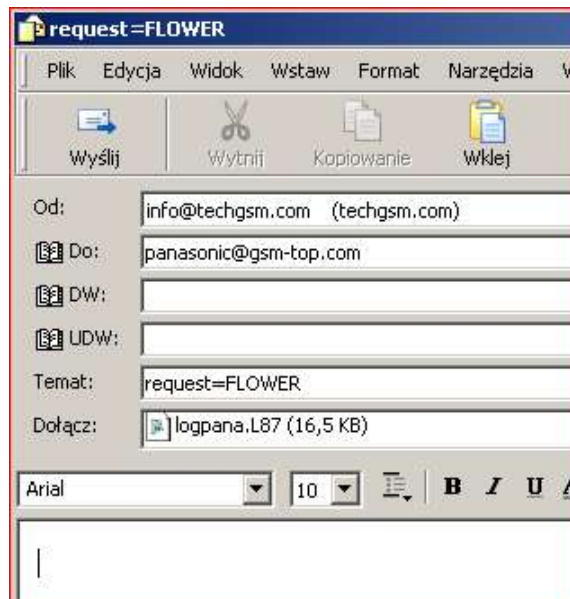
This service is fully automated. You will only have to send email to our AUTOMATED server which calculate log file for You.

Remember that server need data to be formatted in proper way. This is important. In other case You will not get codes.

What You have to do:

Please read log with attached logger, then send log file by email:  
(logger in download software pages)

Example of email:



1. Email from: **info@techgsm.com** <<< Your email used in order form
2. Address to send logfile: **panasonic@gsm-top.com** <<< Address to send log file
3. Password: **FLOWER** <<< password You receive from us

remember in subject write:

request=PASSWORD

4. Attached logfile: **logpana.L87** <<< Readed logfile

You will get the code on email within 2 - 5 minutes from automatic server on email.

Logger is here:

<http://simlock.us/Reader6v1.zip>

www.techgsm.com